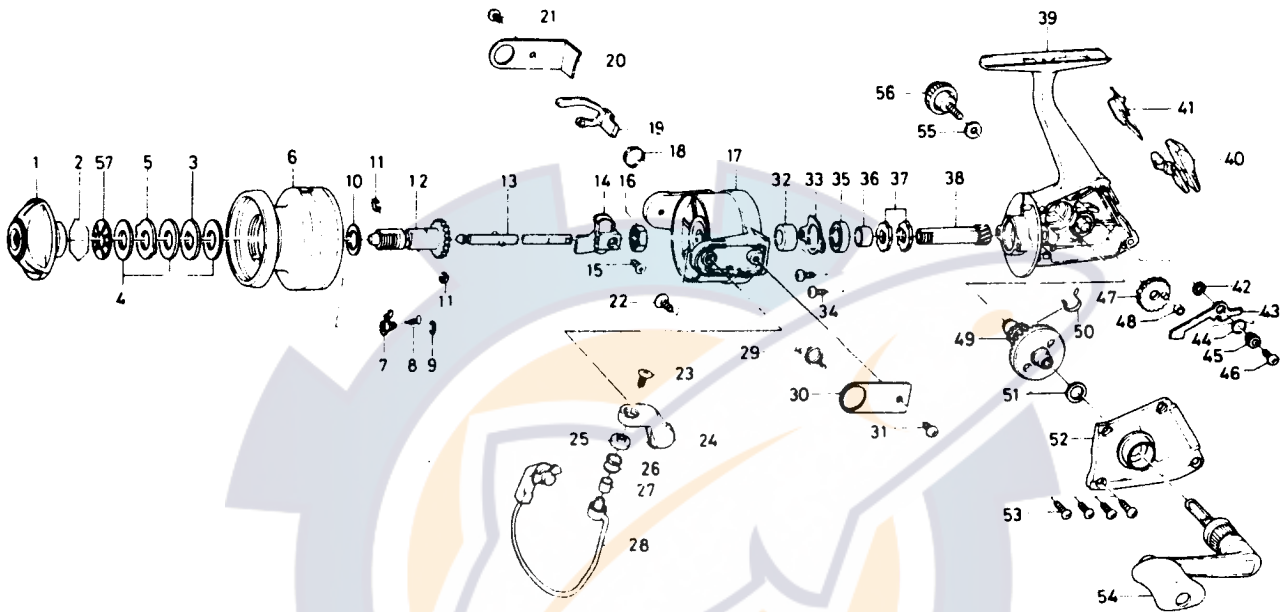




SPINNING REEL UL13



Key No. 1 - 12
E35-1401 Spool assembly

Key No.	Parts No.	Parts Name
1	E14 0901	Drag knob
2	171 7701	Drag washer retainer
3	374 4802	Key washer
4	E14 3301	Drag washer A
5	373 3603	Eared washer
6	F00 6901	Spool
7	B07 5301	Click pawl
8	144 1211	Click spring
9	320 5901	Click retainer
10	E12-3501	Spool washer
11	151-7211	Spool metal leaf spring
12	E23-1801	Spool metal
13	E13 9902	Main shaft assembly
14	E13 9601	Oscillating slider
15	351 0311	Oscillating block screw
16	341 9201	Rotor nut
17	B61 8505	Rotor
18	B61 9101	Lever spring
19	B61 9201	Bail trip lever
20	B61 9703	Bail trip cover
21	B61 7902	Bail trip cover screw
22	B01 7101	Bail arm screw
23	352 2503	Line roller screw
24	E13 8801	Bail arm
25	B45-1601	Line roller washer
26	250-3921	Line roller
27	B45-1501	Line roller bushing
28	E14-1101	Bail
29	B61 8601	Bail spring

Key No.	Parts No.	Parts Name
30	B61-8903	Bail spring cover
31	B61 7902	Bail spring cover screw
32	E14 3101	Spacer A
33	B45-6402	Bearing retainer
34	B83 4402	Bearing retainer screw
35	634-1301	Ball bearing
36	E14 3001	Spacer B
37	E11-3501	Anti-reverse ratchet
38	E13-9501	Pinion gear
39	E35-1201	Body assembly
40	E13-9101	Anti-reverse lever
41	B79-0101	Anti-reverse cam
42	E15-3101	Anti-reverse pawl washer
43	E13-9301	Anti-reverse pawl
44	E13 9401	Anti-reverse pawl spring A
45	B95-9501	Anti-reverse pawl collar
46	B00-8601	Anti-reverse pawl screw
47	B59 1704	Oscillating gear
48	B59 1901	Oscillating gear collar
49	E14 3501	Drive gear
50	E13-9802	Anti-reverse pawl spring B
51	375-8500	Drive gear washer
52	E35-1301	Side cover
53	E13 0502	Side cover screw
54	E09 4702	Handle assembly
55	B92 4901	Handle lock washer
56	E03 5502	Handle lock screw
57	E15 4101	Drag washer B